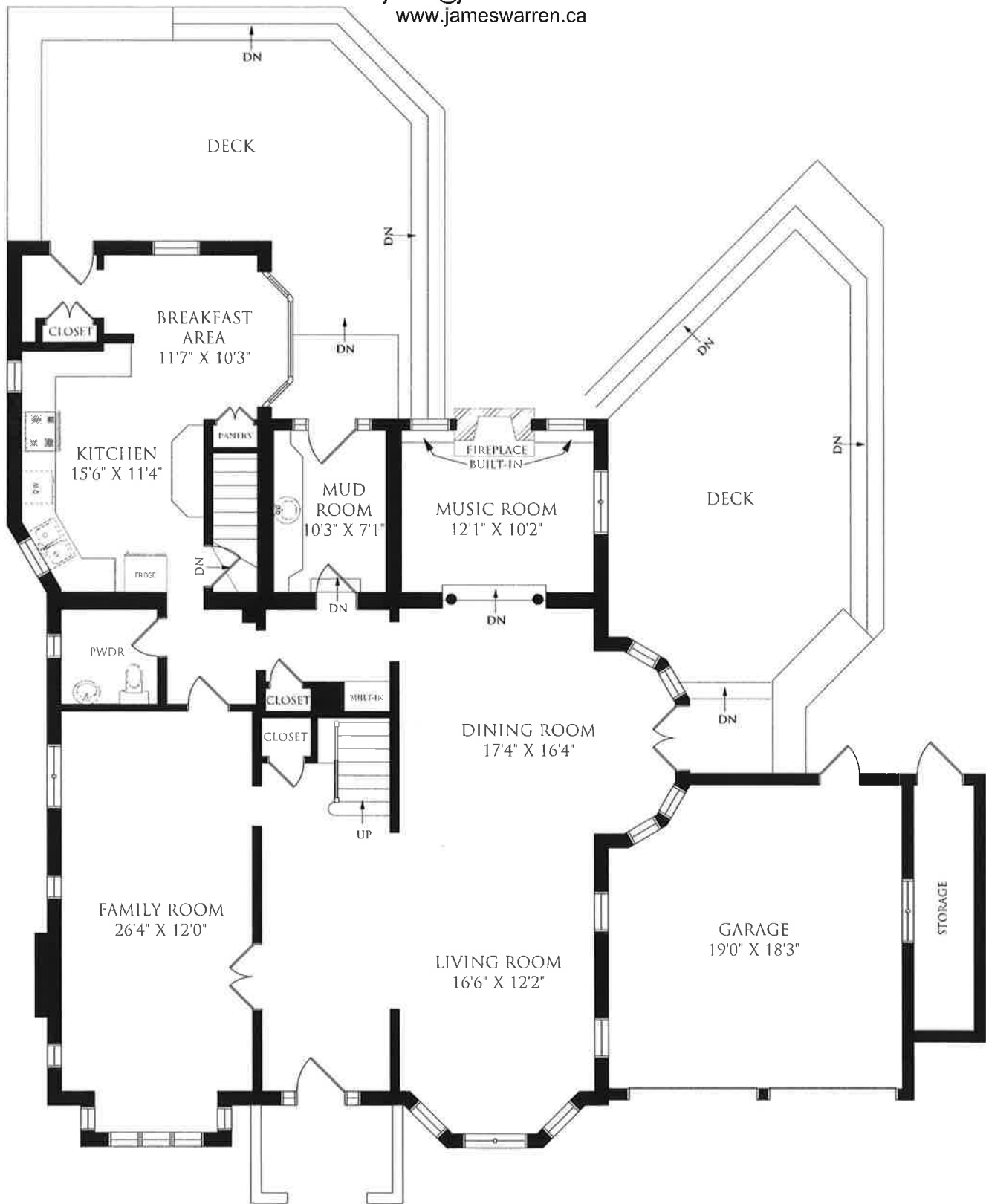


172 ROXBOROUGH DRIVE, TORONTO

James Strathy Warren
Sales Representative
Chestnut Park Real Estate Limited, Brokerage
416.925.9191 - Office
416.323.5276 - Direct Line
416.520.5704 - Mobile
james@jameswarren.ca
www.jameswarren.ca



Wednesday, June 28, 2017

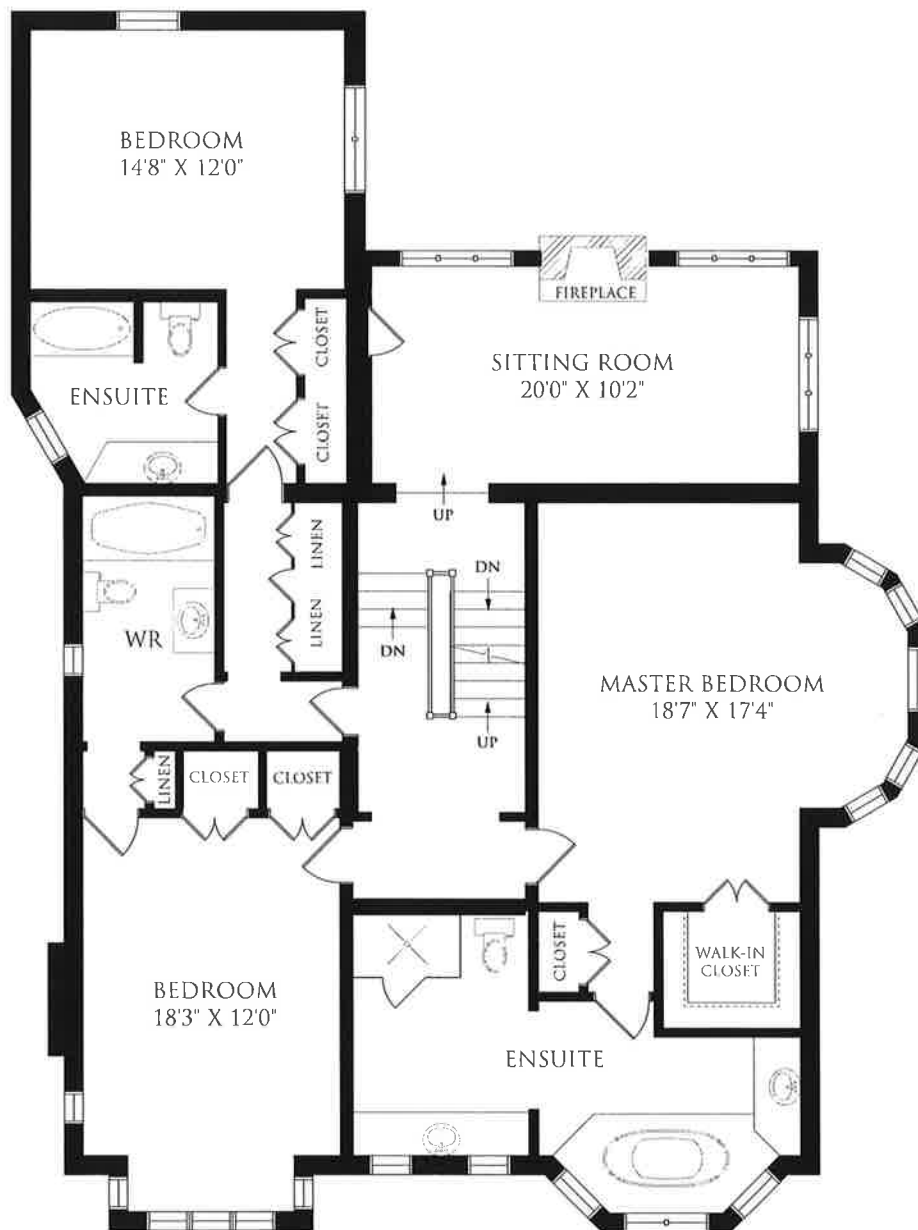
Note: Although measurements and area believed to be accurate they should be considered approximate. This drawing was prepared by Plans4U for the sole benefit and use by the client. No third party may rely on this drawing without the receipt of reliance letter from Plans4U

MAIN FLOOR
1823 SQUARE FEET
CEILING HEIGHT 9'5"

PLANS4U © 2016 PLANSFORYOU
PlansForYou.ca / info@plansforyou.ca / 416.999.5096

172 ROXBOROUGH DRIVE, TORONTO

James Strathy Warren
Sales Representative
Chestnut Park Real Estate Limited, Brokerage
416.925.9191 - Office
416.323.5276 - Direct Line
416.520.5704 - Mobile
james@jameswarren.ca
www.jameswarren.ca



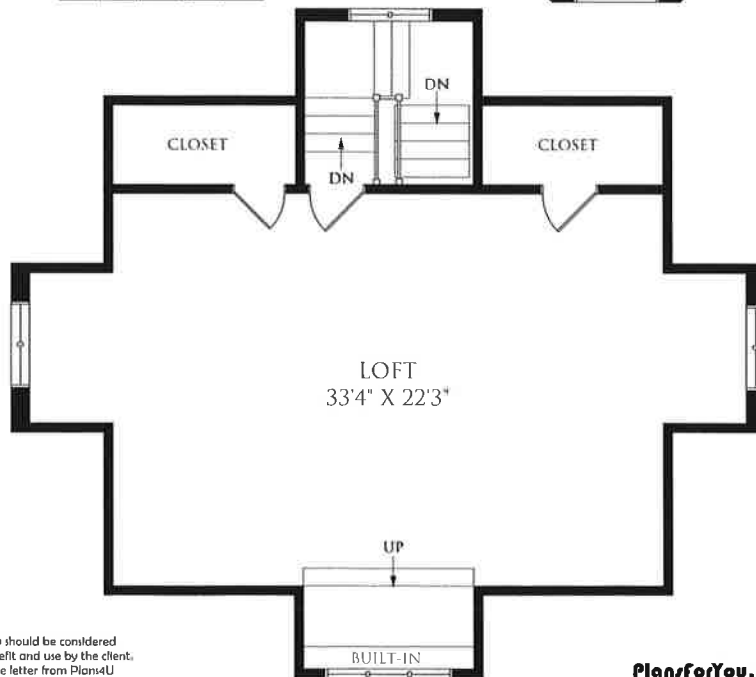
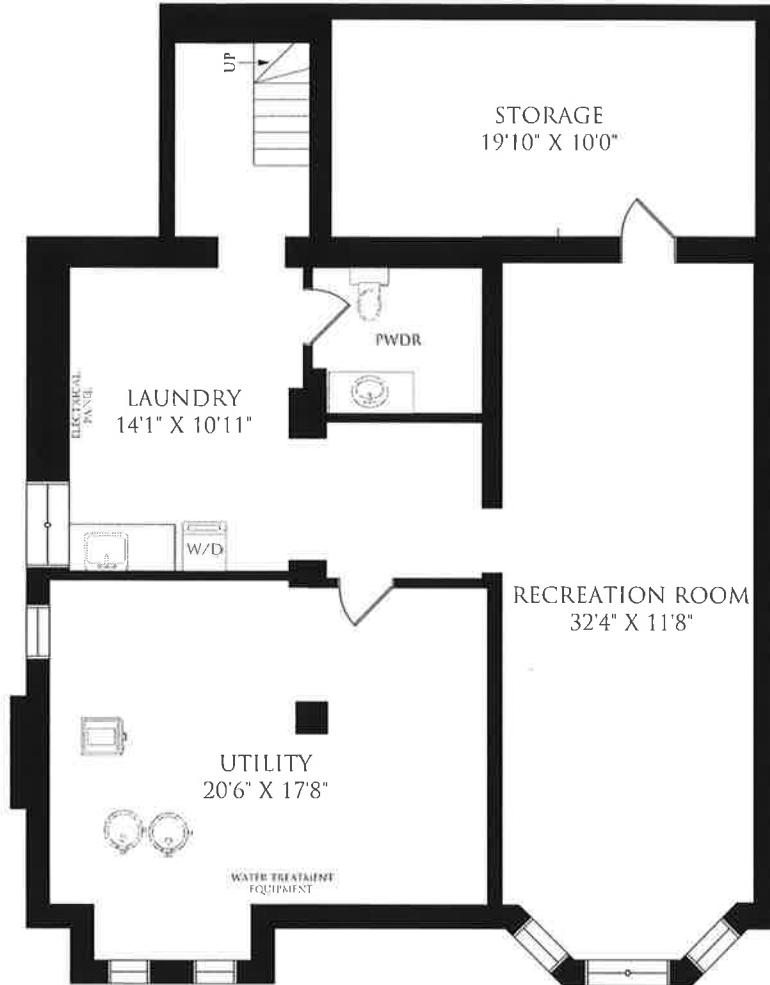
SECOND FLOOR
1827 SQUARE FEET
CEILING HEIGHT 8'4"

Wednesday, June 28, 2017

Note: Although measurements and area believed to be accurate they should be considered approximate. This drawing was prepared by Plans4U for the sole benefit and use by the client. No third party may rely on this drawing without the receipt of reliance letter from Plans4U

172 ROXBOROUGH DRIVE, TORONTO

James Strathy Warren
Sales Representative
Chestnut Park Real Estate Limited, Brokerage
416.925.9191 - Office
416.323.5276 - Direct Line
416.520.5704 - Mobile
james@jameswarren.ca
www.jameswarren.ca



Wednesday, June 28, 2017

Note: Although measurements and area believed to be accurate they should be considered approximate. This drawing was prepared by Plans4U for the sole benefit and use by the client. No third party may rely on this drawing without the receipt of reliance letter from Plans4U