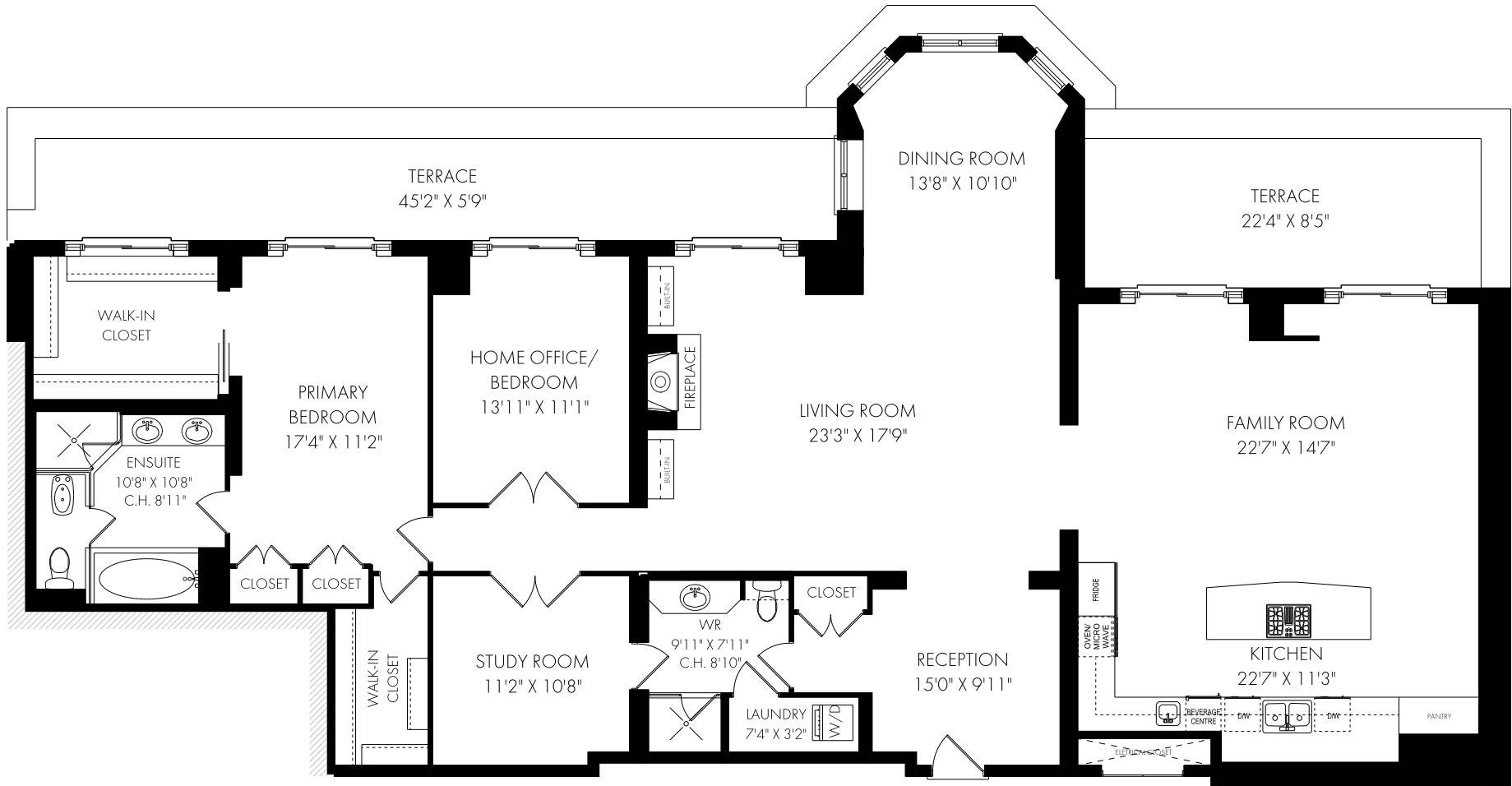


PH2-2 Roxborough Street East, Toronto

FLOOR PLAN



Alexander Obradovich
Sales Representative

Chestnut Park Real Estate Limited, Brokerage

416.925.9191 - Office

416 803-4140 - Mobile

alex@chestnutpark.com

www.alexobradovich.com

James Strathy Warren
Sales Representative

Chestnut Park Real Estate Limited, Brokerage

416.925.9191 - Office

416.520.5704 - Mobile

james@jameswarren.ca

www.jameswarren.ca

CEILING HEIGHT 10'0"
PENTHOUSE #2 - APPROX. 2435 SQUARE FEET
PLUS 450 SQUARE FEET TERRACE



Monday, October 3, 2022

Note: Although measurements and area believed to be accurate they should be considered approximate. This drawing was prepared by Plans4U for the sole benefit and use by the client. No third party may rely on this drawing without the receipt of reliance letter from Plans4U

PLANS4U 2019 PLANSFORYOU

PlansForYou.ca/ info@plansforyou.ca /416.999.5096